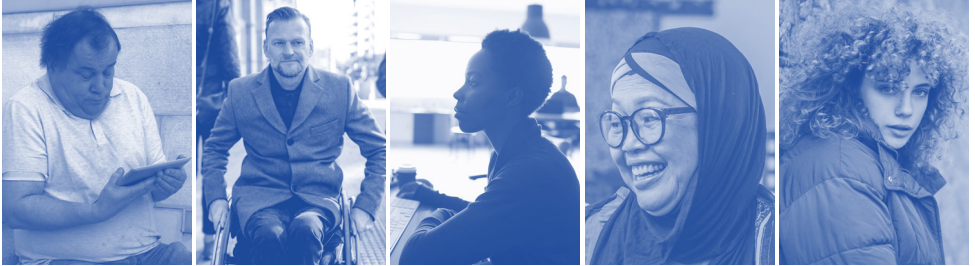




Cumbria, Northumberland,
Tyne and Wear
NHS Foundation Trust



CNTW 2030

Imagining our future, together

Share your thoughts on this form today
or later online

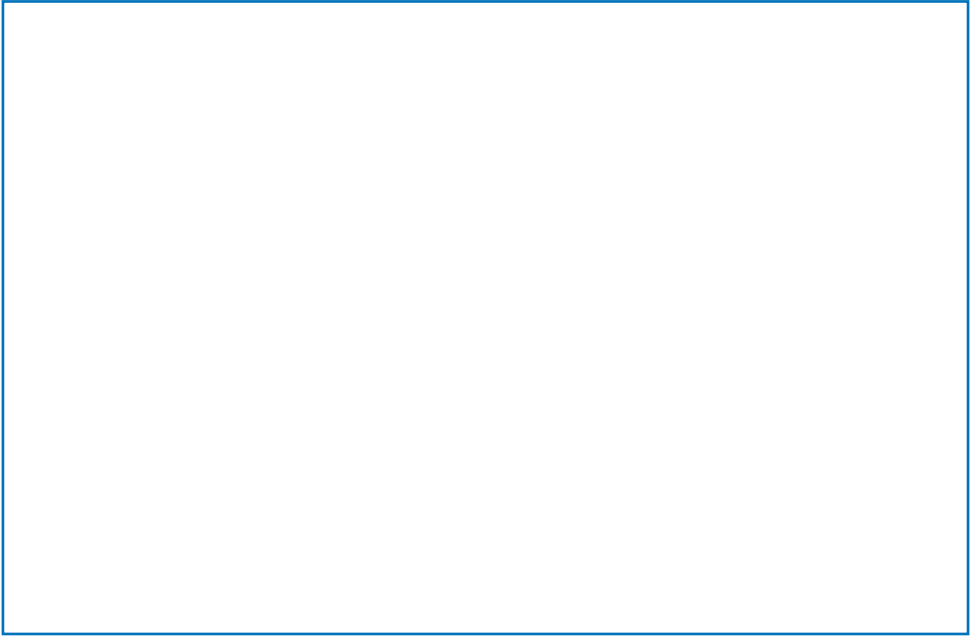


www.cntw.nhs.uk/2030

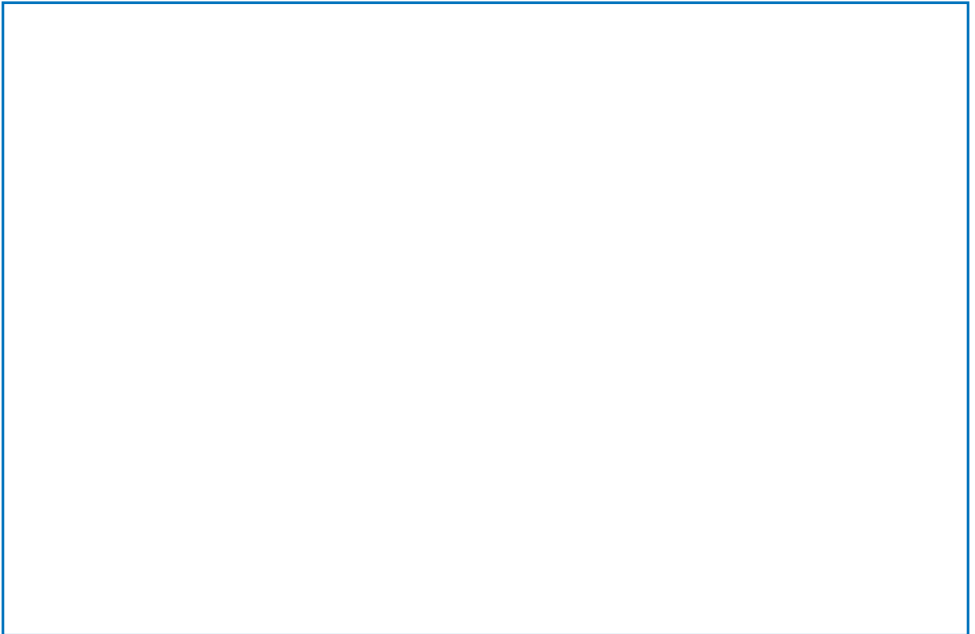


Caring | Discovering | Growing | **Together**

1. What matters to you?

A large, empty rectangular box with a blue border, intended for a user to write their response to the question "1. What matters to you?".

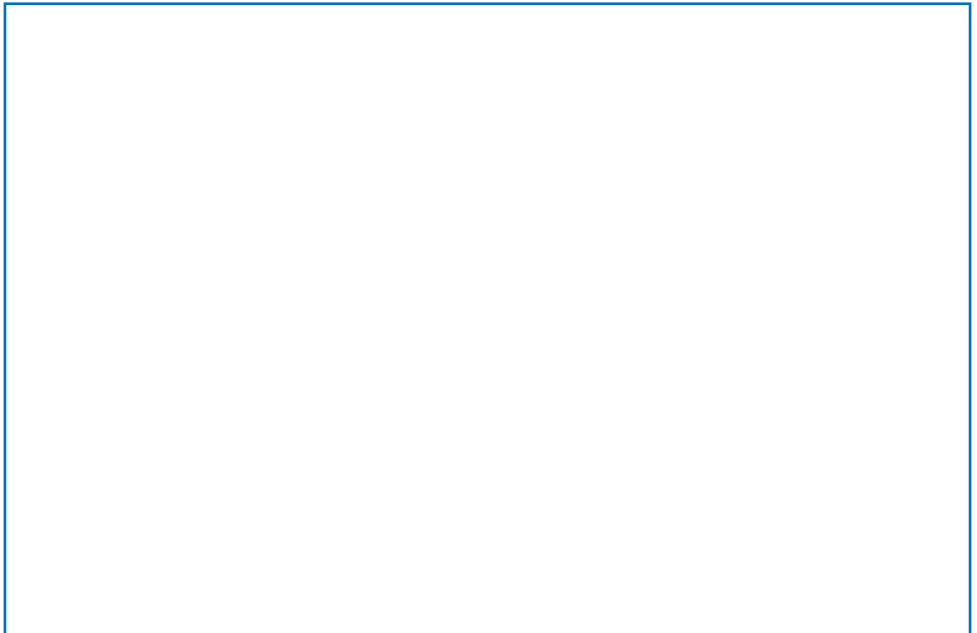
3. What should we do less of (or stop)?

A large, empty rectangular box with a blue border, intended for a user to write their response to the question "3. What should we do less of (or stop)?".

2. What should we do more of?



4. What would make the biggest difference to you?



About you: This information will help us to analyse the survey responses.

I am a:

Current or former service user Current or former staff member
Carer/relative/friend Member of a partner organisation Other

Where is/was your main involvement with CNTW services?

North Cumbria Northumberland Newcastle Gateshead
North Tyneside South Tyneside Sunderland Across CNTW

What is your gender?

Male Female Other _____ Prefer not to say

What age are you?

0-18 19-24 25-34 35-44 45-54 55-64
65-74 75-84 85+ Prefer not to say

What is your ethnic group?

White Mixed/Multiple ethnic groups Asian/Asian British
Black/African/Caribbean/Black British Other ethnic group
Prefer not to say

What is your sexual orientation? _____

Prefer not to say

What is your faith? _____

Prefer not to say

Do you have a disability or are your day to day activities affected by a long term health condition?

Yes No Prefer not to say

Thank you for your time