

# Research and Development e-Bulletin

February  
2019



Produced by: Research and Development  
Issued: February 2019

## Inside This Issue:

<a href="#"><u>Latest News, and Advice from R&amp;D</u></a>	<b>Page:</b> <b>3-6</b>
<a href="#"><u>Funding/Research Funding Alerts</u></a>	<b>7-8</b>
<a href="#"><u>Job, Training, Events &amp; Conference Opportunities</u></a>	<b>9</b>
<a href="#"><u>Research Design Service</u></a>	<b>10</b>
<a href="#"><u>News from NTW Research Delivery Team</u></a>	<b>11-12</b>
<a href="#"><u>NIHR Research Currently in Recruitment</u></a>	<b>13</b>
<a href="#"><u>News from the Library and Knowledge services</u></a>	<b>13</b>
<a href="#"><u>R&amp;D Contacts</u></a>	<b>14</b>





Northumberland,  
Tyne and Wear  
NHS Foundation Trust

# Save the Date!

**Please note the date of the  
Annual Research and  
Development Conference  
has now changed to**

**16<sup>th</sup> October 2019**



## Have you got a story to tell or some exciting news to share?

Have you got a piece of inspiring or thought-provoking research news you need to share? Are you off to present at an event, attending a conference or have a study you want to promote? We want to hear from you!

This is a gentle nudge to remind you to let us know what's going on in your team or anything else you want to share with the rest of the network.

Every month we will be asking you to share your news so we can increase the reach of your stories, studies, events and findings.

The Communications team can work with you to create case studies, press releases, social media posts, articles for [Newsroom](#), or provide online and offline event support.

Simply email [nenccommunications@nihr.ac.uk](mailto:nenccommunications@nihr.ac.uk) and let us know what's going on and how we can help you.

# **Northumberland, Tyne and Wear NHS Foundation Trust selected to take part in innovation programme to improve health and social care**

Northumberland, Tyne and Wear NHS Foundation Trust has been awarded funding by the Health Foundation, an independent charity, to be part of its Innovating for Improvement programme.

Innovating for Improvement aims to improve health and social care delivery and/or the way people manage their own health care through the redesign of processes, practices, services and models of delivery.

The team from Northumberland, Tyne and Wear NHS Foundation Trust will receive up to £75,000 of funding to support the implementation and measurement of their project. The programme will run for 15 months from January 2019.

The project from Northumberland, Tyne and Wear NHS Foundation Trust will work with professional artists to introduce creative activities, to improve staff wellbeing, quality of care and the way people living with dementia and their carers support their own health.

Dr Charlotte Allan, Consultant Psychiatrist, Newcastle Memory Assessment and Management Service said “We are very excited to be working with the Health Foundation, and the charity Equal Arts, on such an innovative project. We are looking forward to using creative, arts-based activities to support staff well-being and extend this to our patients and their carers”

Sarah Henderson, Assistant Director of Improvement Programmes at the Health Foundation, said: “We’re excited to support this project, one of twenty three that have been developed by frontline teams to improve health and social care across the UK.

“We are looking forward to working with the teams to develop their innovative ideas, put them into practice, and gather evidence about how their projects are improving care for patients.”

---

## The Learning Management System

---



The HRA Learning Management System (LMS) is our hub for eLearning modules, resources from our extensive programme of live learning events, and is where bookings for face-to-face training are made.

Our LMS is fully mobile-optimised and is free to use by anyone, on any device.

A screenshot of the LMS login interface. It features a blue background with two white input fields for 'Username' and 'Password'. Below the password field is a white 'Sign in' button. At the bottom, there are two links: 'Forgotten password' and 'Register'.

Registering for our LMS is quick and easy. The video [here](#) provides guidance on setting up an account and finding courses.

## Research Funding Alerts

### [18/184 Public Health Research Programme: Researcher-led](#)

Closing date: 12 March 2019

The Public Health Research Programme are accepting stage 1 applications to their researcher-led workstream

### [18/138 Suicide prevention in high risk groups](#)

Closing date: 19 March 2019

The Public Health Research Programme are accepting stage 1 applications to their commissioned workstream for this topic.

### [18/170 Efficacy and Mechanism Evaluation Programme - Researcher-led](#)

Closing date: 19 March 2019

The Efficacy and Mechanism Evaluation Programme is accepting stage 1 applications to their researcher-led workstream:

### [Research for Patient Benefit Programme- Competition 38](#)

Closing date: 20 March 2019

Applications are invited for Competition 38 of the Research for Patient Benefit programme. The deadline for applications is 20 March 2019.

### [18/185 Antipsychotics for anorexia nervosa](#)

Closing date: 03 April 2019

The Health Technology Assessment Programme is accepting stage 1 applications to their commissioned workstream for this primary research topic:

### [18/189 Combination treatment for dementia with Lewy Bodies and Parkinson's disease dementia](#)

Closing date: 03 April 2019

The Health Technology Assessment Programme is accepting stage 1 applications to their commissioned workstream for this primary research topic:

### [18/191 Care planning intervention for people with dementia who do not have regular contact with an informal carer](#)

Closing date: 03 April 2019

The Health Technology Assessment Programme is accepting stage 1 applications to their commissioned workstream for this primary research topic:

### [18/194 Vagus nerve stimulation for highly treatment-resistant depression](#)

Closing date: 03 April 2019

The Health Technology Assessment Programme is accepting stage 1 applications to their commissioned workstream for this primary research topic:

### [18/195 Extended treatment in early intervention in psychosis services](#)

Closing date: 03 April 2019

The Health Technology Assessment Programme is accepting stage 1 applications to their commissioned workstream for this primary research topic:

[19/05 - Health Services & Delivery Research Programme \(researcher-led evidence synthesis\)](#)

Closing date: 25 April 2019

The Health Services and Delivery Research (HS&DR) Programme is accepting stage 2 evidence synthesis applications to their researcher-led workstream.

[19/06 - Health Services & Delivery Research Programme \(standard researcher-led\)](#)

Closing date: 25 April 2019

The Health Services and Delivery Research (HS&DR) Programme are accepting stage 1 applications to their researcher-led workstream.

[19/10 Health Technology Assessment Programme - researcher-led \(evidence synthesis\)](#)

Closing date: 15 May 2019

The Health Technology Assessment Programme is accepting stage 1 applications to their researcher-led workstream.

[19/11 Health Technology Assessment Programme - researcher-led \(primary research\)](#)

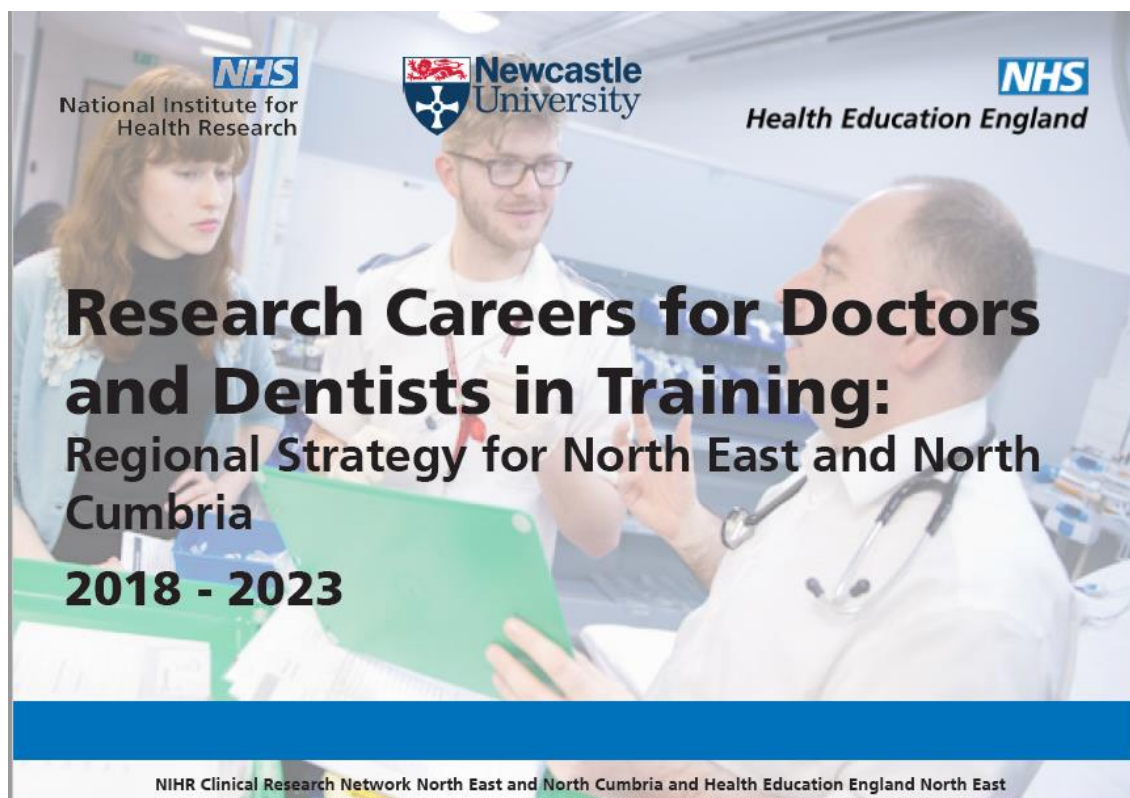
Closing date: 15 May 2019

The Health Technology Assessment Programme is accepting stage 1 applications to their researcher-led workstream.

[Public Health Research Programme Rapid Funding Scheme](#)

Closing date: 31 December 2019

The RFS has been set up to provide the public health research community with an accelerated route to funding for small-scale, short and time sensitive proposals that demonstrate a need for a rapid commissioning process to be followed.



In partnership with Newcastle University and Health Education England, the NIHR Clinical Research Network North East and North Cumbria have today launched a five year strategy for Research Careers for Doctors and Dentists in Training, which is active until 2023.

The strategy is designed to help educate both doctors and dentists in training about the research training opportunities available in the region.

Shaped by contributions from key stakeholders, the strategy is also intended to serve as a resource for trainers and mentors, in order to help advise doctors and dentists in training.

If you would like further information please contact [nenclearning@nihr.ac.uk](mailto:nenclearning@nihr.ac.uk)

A copy of the strategy can be accessed [here](#).

## Research Design Service



### RDS Blog: From the RDS Desk

Minding your Ps and Qs: In the increasingly competitive world of research funding, just how do you stand out from the crowd and ensure your projects land on the top of the funding pile? Read this month's blog and make sure you have the essential ingredients for success.

Click [here](#) to read the blog.

---

[Find out more about how RDS North East & North Cumbria can help you](#)

Want to keep up to date with the latest RDS NENC news? [Sign up to our newsletter here](#)

## News from NTW Research Delivery Team

### THE SAFETY AND EFFICACY OF PSILOCYBIN IN PARTICIPANTS WITH TREATMENT-RESISTANT DEPRESSION

Open to recruitment

Principle Investigator: Professor Hamish McAllister- Williams

Sub Investigator: Dr Mourad Wahba

Psilocybin is a naturally occurring chemical found in particular species of mushrooms, sometimes referred to as 'magic mushrooms'. It is one of a group of drugs known as 'psychedelics' which may have the potential to change perceptions and facilitate insights. A recent preliminary, open-label study has shown significant improvement in depressive symptoms following psilocybin administration with psychological support. Over 40% of participants' sustained response at 3 months and 32% had no need for further antidepressants or therapy at 1 year.

NTW is now recruiting to a which involves any current off prior to administration of a alongside psychological support. by 2 trained facilitators for 6 hours safe environment. Preparation and week period.



multinational research study antidepressants being tapered single dose of psilocybin Participants will be supported on the dosing day, in a quiet follow up visits will last over a 12

#### Inclusion Criteria

- 18 years of age or older
- At least moderate severity of major depressive disorder (MDD).
- Single or recurrent episode of 3 months to 2 years duration
- Failure to respond to an adequate dose and duration of 2, 3, or 4 pharmacological treatments for the current episode. (Failure includes failure to reach an adequate dose and duration due to lack of tolerance).
- Able to discontinue all serotonergic medications during the study, at least 2 weeks prior to baseline, with support from study staff.

#### Brief Exclusion Criteria:

- Current or past history of schizophrenia, psychotic disorder (unless substance induced or due to a medical condition), bipolar disorder, delusional disorder, paranoid personality disorder, schizoaffective disorder, or borderline personality disorder.
- Prior electroconvulsive therapy and/or intravenous ketamine for current episode.
- Current cognitive behavioural therapy (CBT) that will not remain stable for the duration of the study.
- Alcohol or drug abuse within the last year.
- Significant risk of suicide.

*General Medical Exclusion Criteria: Pregnancy, cardiac arrhythmia or uncontrolled hypertension, seizure disorder, uncontrolled OR insulin-dependent diabetes*

#### For further information or potential referrals please contact:

Wendy Hall (Study Nurse) [wendy.hall@ntw.nhs.uk](mailto:wendy.hall@ntw.nhs.uk) 0191 2081362 OR

Susan Wilson (CRN) [susan.wilson@ntw.nhs.uk](mailto:susan.wilson@ntw.nhs.uk) 01912081356



Efficiency, Cost and Quality of Mental Healthcare  
Provision

## Online Survey

### Have Your Say!

#### WHO CAN TAKE PART

If you have a mental health condition, then you can take part.

#### THE SURVEY

Part of this project involves an online survey, asking participants to choose which aspects of care quality are the most important for mental health service provision. We would like to invite you to take part in this survey.

#### THE PROJECT

The purpose of the project is to explore how important aspects of service quality and outcomes of mental healthcare are valued. Studies like this are important. Knowing information like this can help policy-makers and clinicians to decide how best to allocate scarce resources, and provide better quality health services for people with mental health conditions.



Scan me

#### WEBLINK AND FURTHER INFORMATION

If you are interested in taking part, please go to this webpage:

<https://www.sheffield.ac.uk/scharr/sections/heds/mvh/emhepsus>

If you have any questions or would like the survey webpage sent to you by email, please contact the survey lead:

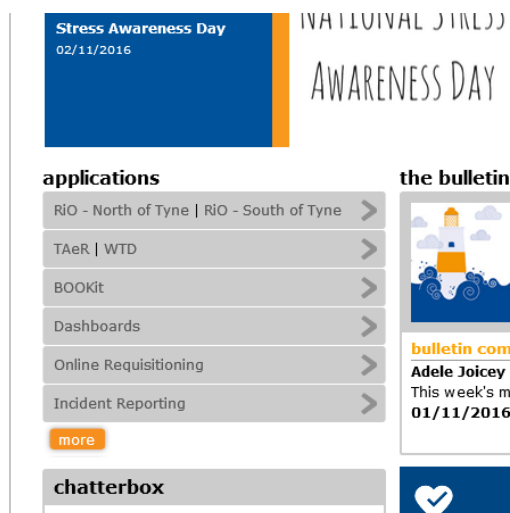
Donna Rowen: [emhep@sheffield.ac.uk](mailto:emhep@sheffield.ac.uk), 0114 222 0801

## NIHR Research Currently in Recruitment

Opportunities for our service users to become involved in research is now available for quick access:

Under “Applications” click the “more” button and then “Research” – this takes you straight to the list of NIHR Portfolio research open in NTW.

### [Research looking for participants](#)



## Library and Knowledge Services

### News from the Library and Knowledge Services

Want an easy way to **make your research more visible** to NTW staff?

K'nect has been upgraded and is now live on the intranet allowing you to create your own profile and **add your publications** for other NTW staff to view. Profiles are searchable enabling greater visibility of your work to colleagues.

You can also add **skills and interests** to your profile making collaborating with colleagues easier.

Add your profile today and start connecting: <https://weblive.ntw.nhs.uk/knect/>



@NTWlibrary

Please follow the link below to view the latest NTW staff publications:

<https://www.ntw.nhs.uk/about/research/#new-ntw-staff-publications>

## Research and Development Contacts

Vicky Ternent – Research Co-ordinator

Email: [Victoria.Ternent2@ntw.nhs.uk](mailto:Victoria.Ternent2@ntw.nhs.uk) Tel: 0191 2467228

Lyndsey Dixon - Research and Development Manager

Email: [Lyndsey.Dixon@ntw.nhs.uk](mailto:Lyndsey.Dixon@ntw.nhs.uk) Tel: 0191 2467221

Simon Douglas – Joint Director of Research Innovation and Clinical Effectiveness

Email: [Simon.Douglas@ntw.nhs.uk](mailto:Simon.Douglas@ntw.nhs.uk) Tel: 01912467222

Jill Davison – Dendron Delivery Team Lead

Email: [Jill.Davison@ntw.nhs.uk](mailto:Jill.Davison@ntw.nhs.uk) Tel: 0191 2467390

Emily Clare – Mental Health Delivery Team Lead

Email: [Emily.Clare@ntw.nhs.uk](mailto:Emily.Clare@ntw.nhs.uk) Tel: 0191 2081356

General contact email: [Research@ntw.nhs.uk](mailto:Research@ntw.nhs.uk) / [Serviceevaluation@ntw.nhs.uk](mailto:Serviceevaluation@ntw.nhs.uk)



Caring | Discovering | Growing | **Together**