

Northumberland, Tyne and Wear NHS Foundation Trust

Board of Directors Meeting

| | |
|---------------|---------------------------|
| Meeting Date: | 24 th May 2017 |
|---------------|---------------------------|

| | |
|----------------------------|--|
| Title and Author of Paper: | Delivering the Learning Disability and or Autism Transforming Care Agenda. Tim Docking & Caroline Wills |
|----------------------------|--|

| | |
|-----------------|--|
| Executive Lead: | Gary O'Hare, Executive Director of Nursing and Operations, and Lisa Quinn, Executive Director of Commissioning and Quality Assurance |
|-----------------|--|

| | |
|--|-------------|
| Paper for Debate, Decision or Information: | Information |
|--|-------------|

Key Points to Note:

1. The National Transforming Care Board have requested improvements in delivery of the programme in terms of bed closures and the development of community services as the North East and Cumbria Transforming Care Board are not achieving the required progress against national trajectories and plans. In order to address this the following are being implemented to strengthen its governance structures including strategic leadership, system oversight and clinical input to ensure delivery over the next 12 months initially. (Summary appendix 1)
 - Cumbria and the North East Transforming Care Executive Strategy Group – comprising Chief Executives the ESG will steer delivery of Transforming Care (TC) for people with learning disabilities, autism or both. The ESG will allow Cumbria and the North East (CNE) to demonstrate control and provide evidence of the stakeholder's ability to remain on track to deliver Building the Right Support (BRS) by 2018/19.
 - Development of a Learning Disability and Autism Operational Delivery Network (ODN) – Cumbria and North East - initially focused on coordinating patient pathways for people with a learning disability, autism or both, between providers across Cumbria and the North East. TEWV are hosting the network. A Chair needs to be identified who would sit in another provider organisation.
 - NHSE Resettlement hub

2. NTW Bed reduction update

At the 14th May 2017 the following patient numbers were in Learning disability beds.

| Service | May 14th 2017 | |
|-------------------------------|---------------|-----------------|
| | All Patients | From North East |
| Autism | 12 | 3 |
| Mitford Bungalows | 5 | 1 |
| Ingram Bungalows | 4 | 3 |
| Medium secure (KDU x 3 wards) | 24 | 20 |
| Low secure | 13 | 13 |
| Locked rehab | 21 | 17 |
| Assessment & treatment | 10 | 10 |
| TOTAL | 89 | 67 |

At the 14th May 2017 there were 67 patients in learning disability beds from the North East & Cumbria region compared with 69 at the end of March (reduction due to the closure of Alnwick).

Since last reported the following changes have occurred:

- NTW Longhirst (NHSE) closed 4th April 2017.
- Alnwick ward (CCG beds) closed 27th April 2017 as planned and the decommissioning process has started. Staff have been supporting across the SCG and will take up their allocated posts (they have all received letters)

Discussions are underway with Specialist Commissioning in relation to further reductions in beds for Forensic Learning disability services and work is currently ongoing with CCGs reviewing Rose Lodge (Assessment & Treatment unit).

3. Opportunities: NTW are looking at the call for application for Wave 2: New Care Models in Tertiary Mental Health with a particular focus on adult secure services for learning disability (the Transforming Care cohort).

Social investment bid to support the development of Positive Behavioural Support in Newcastle. The application to the Life Chances fund has been successful. The next stage is to analyse the current need in Newcastle in order to make a formal proposal for new PBS child service. This is a joint health and social care initiative.

4. Given the level of interest in the NE&C TCP NTW Learning disability and autism services are hosting a number of visits from NHSE Transforming Care to showcase the innovative work we are doing across community and inpatient services.

5. National Guidance: Refresh of the Care and Treatment Review Policy (CTRs) published March 2017
The publication of NHSE Transforming Care model service specifications February 2017
 - Acute learning Disability inpatient services (CCG commissioned)
 - Specialist multi-disciplinary forensic support in the community
 - Enhanced (intensive) multi-disciplinary health and social care support in the community for people

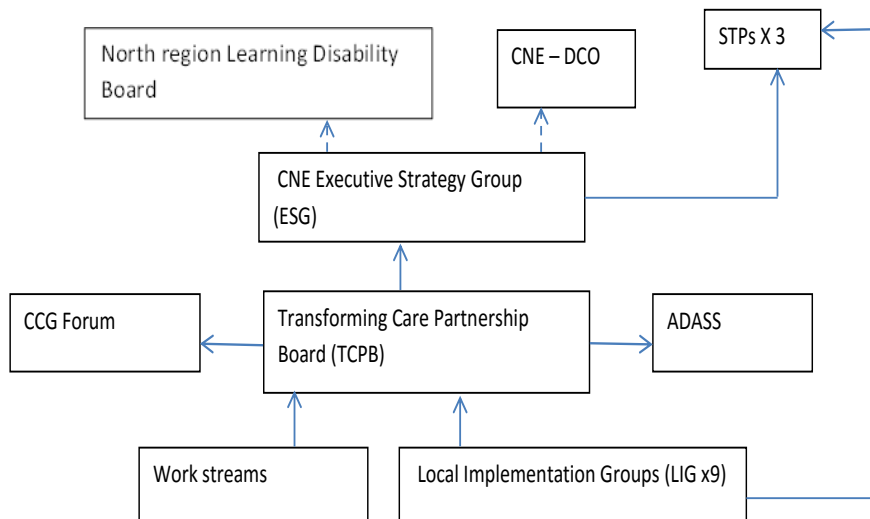
6. LeDer Pilot and Mortality review- Following publication of the National Guidance of Learning from Deaths for Trusts this work is now being picked up as part of the mortality work as the guidance recommends using LeDeR where the person who has died has a learning disability

7. Greenlight toolkit – High response levels show the desire to ensure that people with learning disability and autism can access our adult services. The tool showed that we are rating ourselves as green in a lot more areas than last year. The responses and comments did identify the following areas as still being amber:
 - staff values and attitudes
 - help with personal care
 - buildings and environment, leadership,
 - monitoring and information
 - working together although the response was spilt on this

Given the information from the Greenlight toolkit along with current national and statutory guidance we will be developing a Trustwide Learning Disability and Autism strategy to assist with the development and embedding of the current good work, ensuring that we work with those who use our services.

Appendix 1

A summary of the governance framework to support CNE TC Delivery is outlined below:



Risks Highlighted to Board :

Bed trajectories

Does this affect any Board Assurance Framework/Corporate Risks?

Please state Yes or **No**

If Yes please outline

Equal Opportunities, Legal and Other Implications: N/A

Outcome Required: Board support for the formal closure of the two wards,
Alnwick and Longhirst

Link to Policies and Strategies:
National Transforming Care programme