

NORTHUMBERLAND, TYNE AND WEAR NHS FOUNDATION TRUST

BOARD OF DIRECTORS MEETING

Meeting Date: 28 January 2015

Title and Author of Paper: NHS SMS – National Reported Physical Assaults 2013/2014 Author of Paper in response to this report – Tony Gray – Head of Safety / Patient Experience.

Paper for Debate, Decision or Information: Information and Debate

Key Points to Note:

- National data published on Monday 17th November 2014.
- Nationally there were 68,683 assaults recorded for period April 13 – March 14 in comparison to 61,571 assaults for April 12 – March 13, an increase of 7,112 nationally.
- There were 47,184 assaults recorded in mental health trusts for period April 13 – March 14 in comparison to 43,699 for period April 12 – March 13, an increase of 3,485. All mental health trust activity has been increased by 2% following the national audit and under-reporting identified in the Trusts audited.
- NTW was not audited this year, but was audited last year and reported 3,272 assaults on staff for period April 12 – March 13. As part of the annual submission for April 13 – March 14, in June 2014, the Trust reported 3,270 assaults, but this has been increased to 3,335 in the nationally published information with the 2% increase applied, an increase of 63 assaults.
- NTW has reported the highest number of physical assaults within mental health, the next highest reporting Trust reported 2,731 assaults on staff. (this is highlighted further in the report).
- Whilst not available in the national data, the 3,272 physical assaults by actual harm breakdown as follows, 527 no harm (but still fits the criteria as contact made), 2,322 minor harm, and 418 were moderate harm and 3 were major harm, none of these were investigated as serious incidents.
- There were 25 sanctions reported in which Police have been involved in the assaults, but this figure is under reported , as the Police were contacted 108 times for assaults that were not including clinical factors.
- Activity for NTW by each of the clinical groups has been included as graphical information to show how the Trust activity forms the national picture.
- Activity is included at page 8 which indicates that 20% (n=668) of physical assaults on staff in this period were committed by patients who are receiving services from us, but their care is not funded by our local Clinical Commissioning Groups.

Outcome required: Minuted by the Board of Directors. Greater emphasis in Directorates to record outcomes of physical assaults when Police are involved in the incident.

Introduction

NHS Protect has policy and operational responsibility for the management of security in the NHS. This includes tackling physical and non-physical assault against staff.

As part of this responsibility there is a requirement to report all physical and non-physical assaults to them on an annual basis. To do this each Trust must check their violent incidents to ensure that they fall into the following definitions:-

Physical Assault – The intentional application of force to the person of another, without lawful justification resulting in physical injury or personal discomfort.

Non-Physical Assault – The use of inappropriate words or behaviour causing distress and / or constituting harassment.

As in previous years NHS Protect have carried out a random sample audit of Trust's to ensure quality of data and that assaults that were reported through risk systems matched the definition above. In 2013 Northumberland, Tyne & Wear NHS Foundation Trust was audited in September 2013, the first time in 5 years, and the audit evidenced 100% compliance against the standards, in essence this means that irrespective of other audit outcomes nationally, our figure this year has not been adjusted down over as in previous years. It has also been confirmed by NHS Protect that the national audits have been completed with a success rate of 99.9%, and as such all other Trusts figures are accurately reported for 2012 / 13. For this years figures (2013 / 14) the Trust was not audited , but the Trusts that were they were found to be under reporting , as such the national figure has been increased by 2% for all Trusts.

NHS Protect – Published Figures

The table below gives a comparison of the published figures for the last four years.

	2010/ 11	2011/ 12	2012/13	2013/14
Type of Trust	Number of Physical Assaults	Number of Physical Assaults	Number of Physical Assaults	Number of Physical Assaults
Ambulance	1,566	1,630	1,397	1,868
Acute	13,436	15,536	16,475	17,900
Primary Care	3,507	1,540	0	1,731
MH & LD	39,321	41,038	43,699	47,184
Special HAs	0	0	0	0
Total	57,830	59,744	61,571	68,683

Mental Health & Learning Disability Trust specific information

The following table gives a breakdown of the differences in violence against staff over the last 4 years from the highest reporting Trusts. From these figures it can be seen that NTW is the highest reporter of physical assaults on staff within a mental health setting in 2012 / 13.

Trust	2010/11 Total Assaults	2011/12 Total Assaults	2012/ 13 Total Assaults	2013/ 14 Total Assaults
Northumberland, Tyne & Wear NHS Foundation Trust	2,347	2,198	3,272	3,335
Southern Health NHS Foundation Trust	1,939	1,594	1,930	2,731
Coventry and Warwickshire Partnership NHS Trust	1,316	2,202	1,780	2,540
Tees, Esk & Wear Valleys NHS Foundation Trust	1,783	1,378	1,331	1,548
Lancashire Care NHS Foundation Trust	887	881	1,043	1,446
Nottinghamshire Healthcare NHS Trust	1,417	1,467	1,430	1,363
Leeds Partnership NHS Foundation Trust	813	1,164	1,506	1,275
Central & North West London NHS Foundation Trust	815	1,050	1,267	1,259
Norfolk and Suffolk NHS Foundation Trust	674	912	1,238	1,220
South London and Maudsley NHS Foundation Trust	1,213	1,466	1,230	1,192

2013 / 14 Information

The following table indicates the assault rates when assaults per 1000 staff is applied to both the DH total declared staff figures (2) and the Trusts declared total staff (4) as at 31st March 2014.

Trust	Total Assaults (1)	DH total staff (2)	Assaults per 1000 staff (3)	Declared total staff (4)	Assaults per 1000 staff(5)	Declared Sanctions (6)
Calderstones Partnership NHS Foundation Trust	1,195	1,635	731	1,088	1,098	44
Coventry and Warwickshire Partnership NHS Trust	2,540	4,034	630	4,916	517	1
Northumberland, Tyne & Wear NHS Foundation Trust	3,335	6,020	554	6,464	516	25
Hertfordshire Partnership NHS Foundation Trust	1,034	2,553	405	2,653	390	0
Sheffield Health and Social Care NHS Foundation Trust	1,143	2,738	417	3,180	359	0

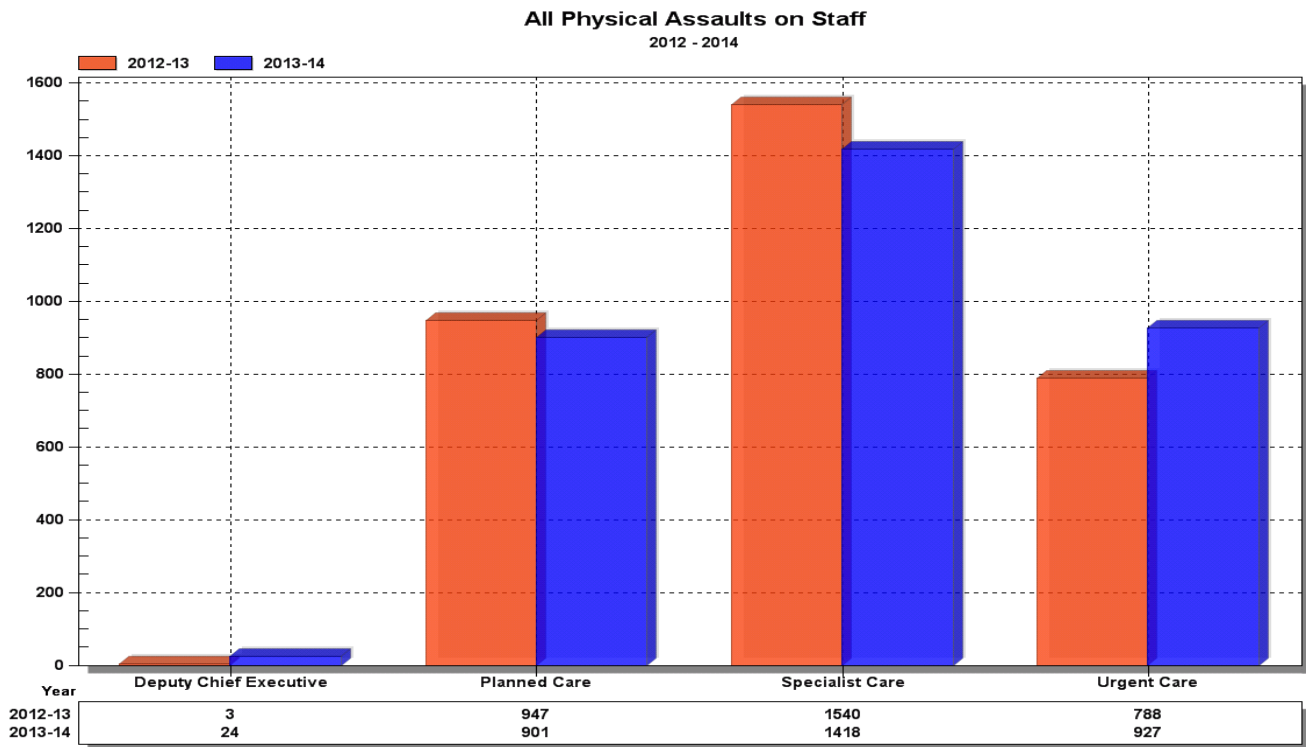
When considering the physical assaults on staff against staff numbers the above table indicates that NTW NHS FT is 3rd in relation to assaults per 1,000 staff, this is the denominator used by NHS Protect to give a basic form of comparison relating to sizes of organisation.

When looking at the actual activity reported for NTW NHS FT, the following tables breakdown the activity within the Trust by Directorates.

The figures for this graph will differ slightly to the reported figures above, based on 2 factors which are:-

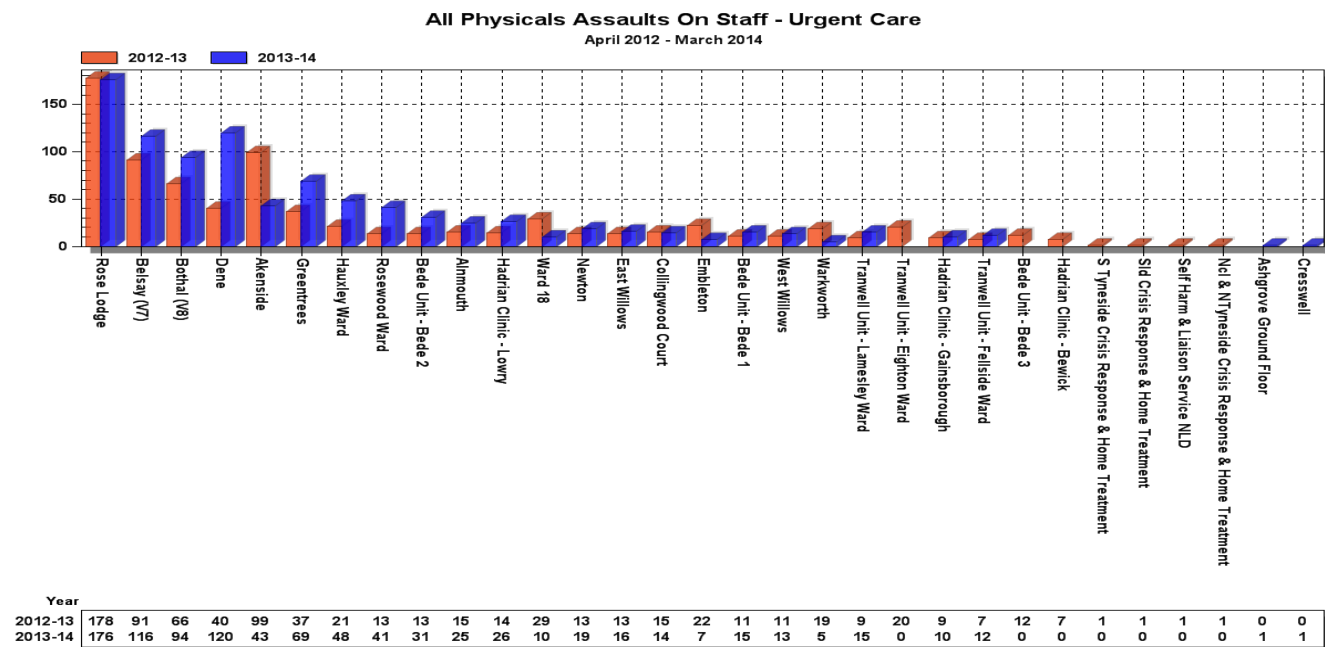
1. The increase in the national figures for previous years due to inaccuracy post audit.
2. Any late reported figures in the Trust, not included in the national data, 0 for 2013/14.

Graph 1 – Annual National Comparison for 2012 - 2014 for NTW



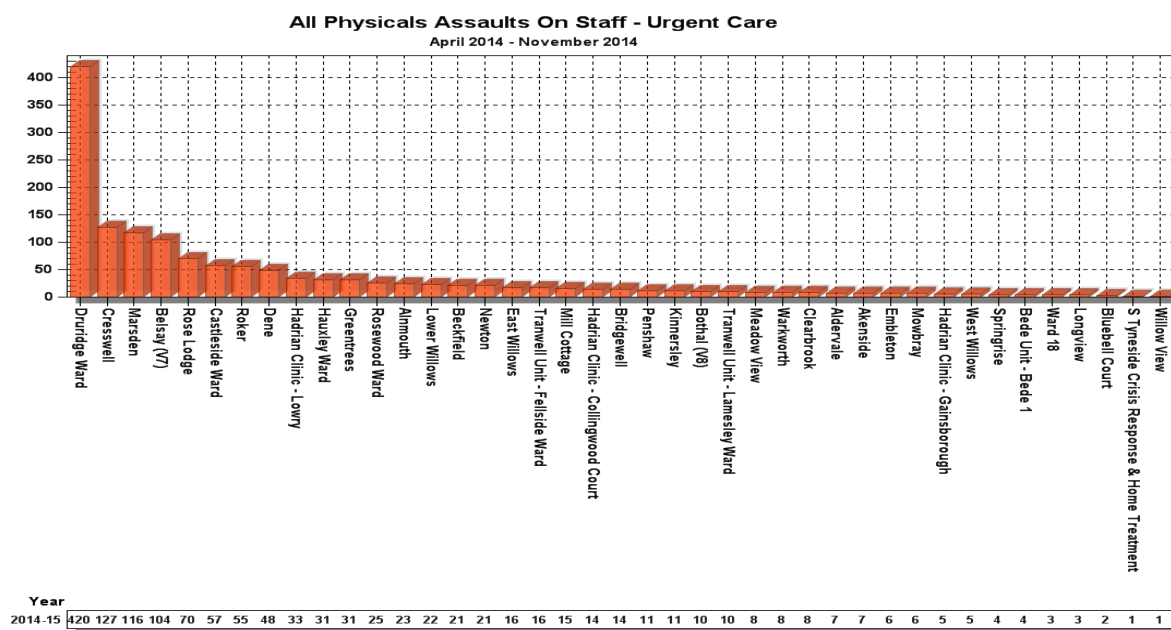
The following graphs give a view of the historical physical assaults and the high reporting areas, but must be viewed with a note of caution, as they are affected by organisational change. i.e. when beds moved from Planned Care to Urgent Care, i.e. this will remove Druridge from Planned Care historic activity, but won't put it into Urgent Care historically. This is the reason why this year, current activity has been included to give a more realistic feel of activity across the Trust.

Graph 2 – Annual Comparison for Urgent Care 2012 - 2014

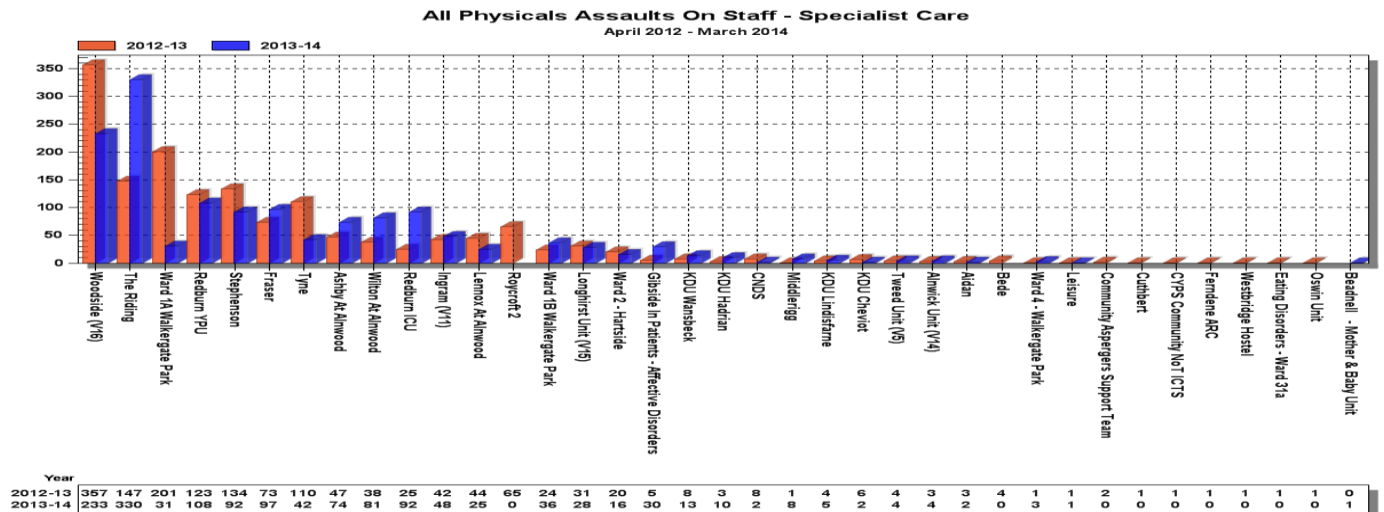


Graph 3 – Current Year April 14 – November 14

Based on the below information for the 8 months reported this would extrapolate to 2,098 physical assaults in a full year for 14-15, however this is likely an over-estimation due to the opening of Hopewood Park in September 2014, which will likely reduce physical assaults on staff and patients.

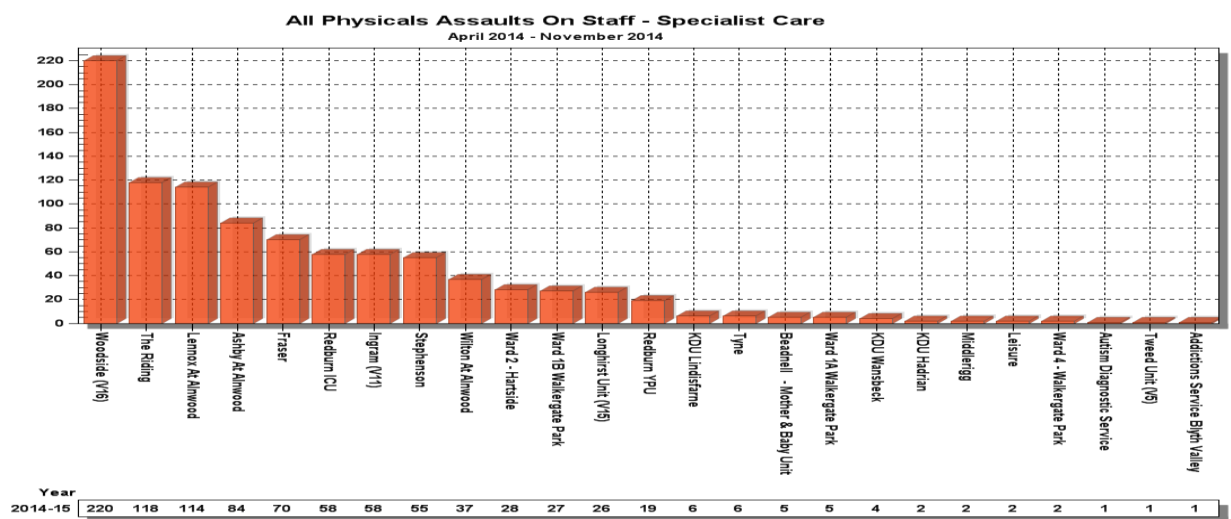


Graph 4 – Annual Comparison for Specialist Care 2012 - 2014

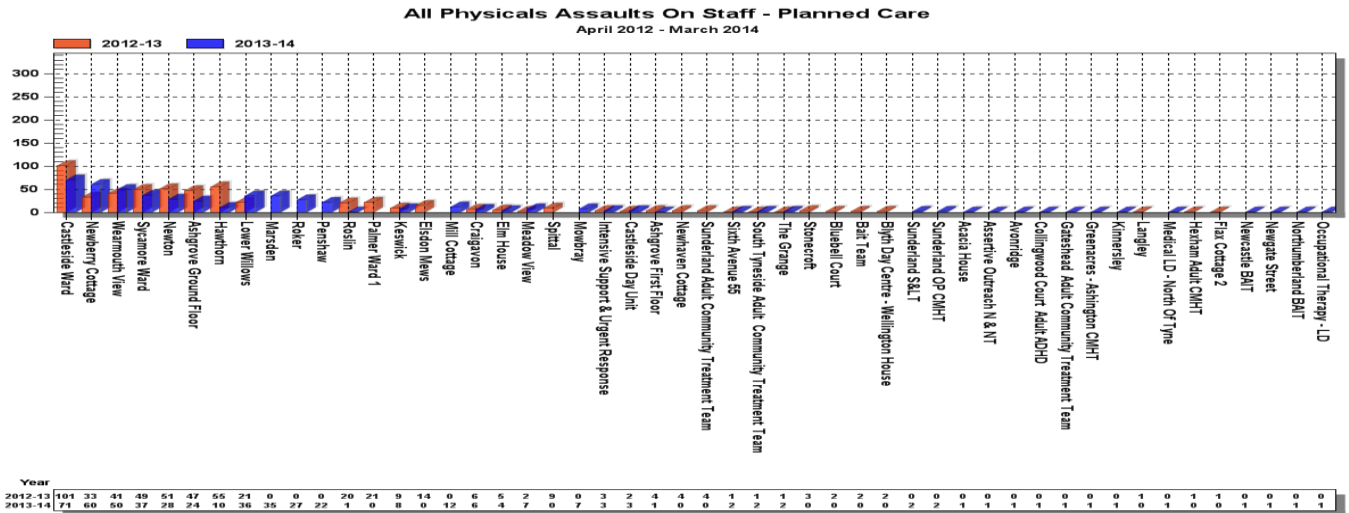


Based on the below information for the 8 months reported this would extrapolate to 1,426 physical assaults in a full year for 14-15.

Graph 5 – Current Year April 14 – November 14

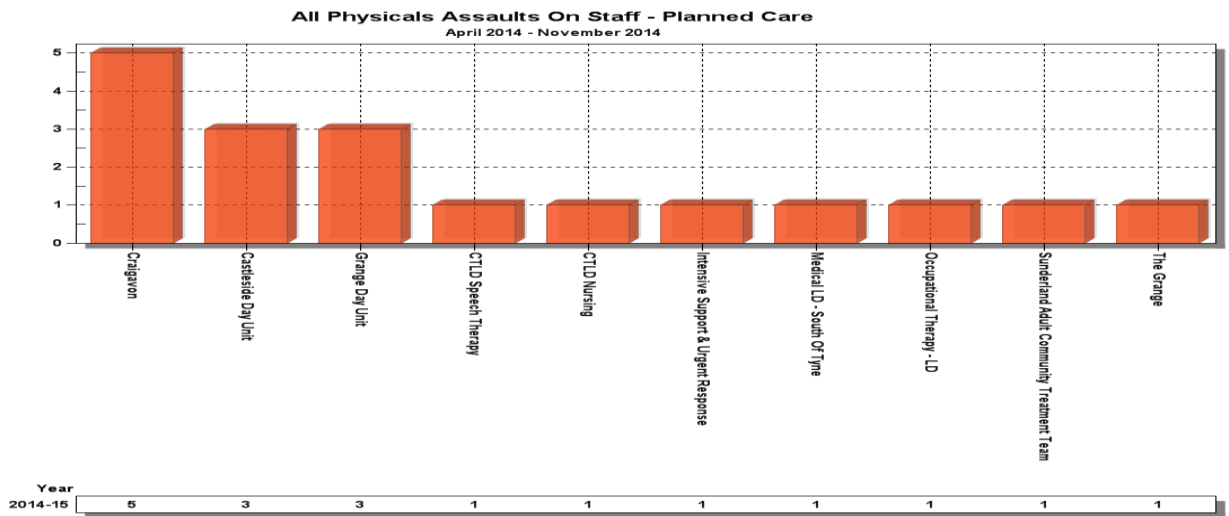


Graph 6 – Annual Comparison for Planned Care 2012 - 2014



Based on the below information for the 8 months reported this would extrapolate to 27 physical assaults in a full year for 14-15.

Graph 7– Current Year April 14 – November 14



Based on the above estimations and without further bed reductions / increases, it is anticipated that the Trust will report approximately 3,000 physical assaults for period April 2014 – March 2015. Whilst this will be a reduction, likely we will still be one of the highest reporters of physical assaults.

Specific information relating to residency of patients who create physical assaults on staff

Due to the services that are provided by the Trust which include both locally commissioned by the 7 Clinical Commissioning Groups as well as regional and national services commissioned by NHS England, it is acknowledged that not all assaults, and indeed the nationally published information, can be compared like for like to other organisations.

The following is a breakdown of the residency of the patients who created assaults on staff in 2013/14

Local CCG

CCG	Number of Assaults	% of total
NHS GATESHEAD CCG	178	5%
NHS NEWCASTLE NORTH AND EAST CCG	137	4%
NHS NEWCASTLE WEST CCG	457	14%
NHS NORTH TYNESIDE CCG	182	5%
NHS NORTHUMBERLAND CCG	920	28%
NHS SOUTH TYNESIDE CCG	137	4%
NHS SUNDERLAND CCG	520	15%
	2531	75%

In order to understand the complexity of assaultive behaviour the following table break down those patients who care is funded by the appropriate CCG, and the locations in which those assaults occurred.

CCG	Number of Assaults
NHS GATESHEAD CCG	178
Bede Unit - Bede 1	1
Dene	3
East Willows	1
Elm House	1
Fraser	26
Gateshead Adult Community Treatment Team	1
Greentrees	1
Hadrian Clinic - Collingwood Court	1
Redburn ICU	2
Rose Lodge	4
Rosewood Ward	1
Roslin	1
The Riding	12
The Riding	34
Tranwell Unit - Fellside Ward	8
Tranwell Unit - Lamesley Ward	2
Tranwell Unit - Lamesley Ward	11
Tyne	30

Ward 1A Walkergate Park	29
Ward 1B Walkergate Park	2
CCG	Number of Assaults

NHS NEWCASTLE NORTH AND EAST CCG	137
Akenside	34
Alnmouth	8
Ashgrove Ground Floor	1
Ashgrove Ground Floor	7
Bede Unit - Bede 1	1
Belsay (V7)	5
Bothal (V8)	1
Castleside Ward	6
Collingwood Court Adult ADHD	1
Cresswell	3
Dene	5
Embleton	1
Gibside In Patients - Affective Disorders	2
Greentrees	5
Hadrian Clinic - Collingwood Court	6
Hadrian Clinic - Gainsborough	1
Hadrian Clinic - Lowry	10
KDU Hadrian	1
Lower Willows	5
Newberry Cottage	5
Newton	9
Penshaw	2
Tranwell Unit - Fellside Ward	2
Woodside (V16)	19

CCG	Number of Assaults
NHS NEWCASTLE WEST CCG	457
Aidan	2
Akenside	3
Alnmouth	3
Ashby At Alnwood	74
Ashgrove First Floor	1
Ashgrove Ground Floor	15
Belsay (V7)	68
Castleside Day Unit	1
Castleside Ward	34
CNDS	1
Dene	10
Embleton	1
Facilities Management	2
Greentrees	18
Hadrian Clinic - Collingwood Court	4

Hadrian Clinic - Lowry	11
Hauxley Ward	23
Keswick	1
Lennox At Alnwood	25
Marsden	5
Newberry Cottage	11
Newcastle BAIT	1
Newton	27
Penshaw	7
Rose Lodge	13
Tranwell Unit - Fellside Ward	1
Tranwell Unit - Lamesley Ward	2
Ward 18	2
Ward 4 - Walkergate Park	1
Wearmouth View	6
Wilton At Alnwood	81

CCG	Number of Assaults
NHS NORTHUMBERLAND CCG	920
Acacia House	1
Alnmouth	7
Alnwick Unit (V14)	4
Avonridge	1
Bede Unit - Bede 2	3
Belsay (V7)	14
Bothal (V8)	92
Castleside Ward	6
Cresswell	80
Druridge Ward	281
Elm House	3
Embleton	3
Facilities Management	7
Fraser	33
Greenacres - Ashington CMHT	1
Greentrees	23
Hadrian Clinic - Gainsborough	2
Hadrian Clinic - Lowry	2
Hauxley Ward	25
Ingram (V11)	35
KDU Cheviot	2
KDU Hadrian	9
KDU Lindisfarne	4
KDU Wansbeck	13
Keswick	2
Kinnersley	1
Leisure	1
Longhirst Unit (V15)	11
Medical LD - North Of Tyne	1
Middlerigg	5
Newgate Street	1

Newton	7
Northumberland BAIT	1
Redburn YPU	8
Rose Lodge	20
Sixth Avenue 55	2
Stephenson	3
The Riding	91
Tweed Unit (V5)	4
Tyne	12
Ward 1A Walkergate Park	1
Ward 1B Walkergate Park	6
Ward 2 - Hartside	2
Warkworth	2
West Willows	5
Woodlands Cottage	1
Woodside (V16)	82

NHS SOUTH TYNESIDE CCG	137
Bede Unit - Bede 1	6
Bede Unit - Bede 2	21
Castleside Ward	10
Cresswell	2
Dene	9
East Willows	1
Facilities Management	3
Fraser	2
Hadrian Clinic - Collingwood Court	1
Hawthorn	3
Marsden	1
Mowbray	2
Newberry Cottage	13
Penshaw	10
Roker	2
Rose Lodge	3
Rosewood Ward	2
South Tyneside Adult Community Treatment Team	1
Sycamore Ward	14
Ward 18	7
Ward 2 - Hartside	3
Wearmouth View	19
West Willows	2

NHS SUNDERLAND CCG	520
Beadnell - Mother & Baby Unit	1
Bede Unit - Bede 1	4
Bede Unit - Bede 2	2
Castleside Ward	10
Craigavon	6

Cresswell	5
Dene	84
East Willows	10
Facilities Management	10
Greentrees	6
Hadrian Clinic - Gainsborough	2
Hawthorn	7
Intensive Support & Urgent Response	3
Keswick	5
Longhirst Unit (V15)	1
Lower Willows	31
Marsden	8
Meadow View	5
Mill Cottage	12
Mowbray	5
Newberry Cottage	28
Penshaw	3
Roker	25
Rose Lodge	134
Rosewood Ward	33
South Tyneside Adult Community Treatment Team	1
Stephenson	22
Sunderland OP CMHT	2
Sunderland S<	2
Sycamore Ward	18
Tranwell Unit - Fellside Ward	1
Ward 18	1
Ward 1A Walkergate Park	1
Ward 2 - Hartside	3
Ward 4 - Walkergate Park	2
Wearmouth View	24
West Willows	3

With the above figure in mind this is how the national reporting would look without the assaults created by patients who are not resident in our local CCG areas.

	2010/11	2011/12	2012/ 13	2013/ 14
Trust	Total Assaults	Total Assaults	Total Assaults	Total Assaults
Northumberland, Tyne & Wear NHS Foundation Trust	2,347	2,198	3,272	2,531*
Southern Health NHS Foundation Trust	1,939	1,594	1,930	2,731
Coventry and Warwickshire Partnership NHS Trust	1,316	2,202	1,780	2,540
Tees, Esk & Wear Valleys NHS Foundation Trust	1,783	1,378	1,331	1,548
Lancashire Care NHS Foundation Trust	887	881	1,043	1,446
Nottinghamshire Healthcare NHS Trust	1,417	1,467	1,430	1,363
Leeds Partnership NHS Foundation Trust	813	1,164	1,506	1,275
Central & North West London NHS Foundation Trust	815	1,050	1,267	1,259
Norfolk and Suffolk NHS Foundation Trust	674	912	1,238	1,220
South London and Maudsley NHS Foundation Trust	1,213	1,466	1,230	1,192

*It is also acknowledged that other Trusts activity would diminish if their regional or national activity is taken out.

Trust	Total Assaults (1)	DH total staff (2)	Assaults per 1000 staff (3)	Declared total staff (4)	Assaults per 1000 staff(5)	Declared Sanctions (6)
Calderstones Partnership NHS Foundation Trust	1,195	1,635	731	1,088	1,098	44
Coventry and Warwickshire Partnership NHS Trust	2,540	4,034	630	4,916	517	1
Northumberland, Tyne & Wear NHS Foundation Trust	2,531	6,020	390	6,464	391	25
Hertfordshire Partnership NHS Foundation Trust	1,034	2,553	405	2,653	390	0
Sheffield Health and Social Care NHS Foundation Trust	1,143	2,738	417	3,180	359	0

Non local CCG

CCG	Number of Assaults	% of total
25 different CCG's	668	20%

Using the figures above to estimate the assault rates by 1000 staff for patients who are receiving either regional or national service from us the table would look like the following.

Trust	Total Assaults (1)	DH total staff (2)	Assaults per 1000 staff (3)	Declared total staff (4)	Assaults per 1000 staff(5)	Declared Sanctions (6)
Calderstones Partnership NHS Foundation Trust	1,195	1,635	731	1,088	1,098	44
Coventry and Warwickshire Partnership NHS Trust	2,540	4,034	630	4,916	517	1
Northumberland, Tyne & Wear NHS Foundation Trust	668	6,020	110	6,464	103	25
Hertfordshire Partnership NHS Foundation Trust	1,034	2,553	405	2,653	390	0
Sheffield Health and Social Care NHS Foundation Trust	1,143	2,738	417	3,180	359	0

No CCG identified, this is due to a number of reasons as follows:-

- The patient is of no fixed abode
- The patient is resident of Ireland, Wales or Scotland
- The patient was registered against a hospital without a home address

No CCG Identified	Number of Assaults	% of total
15 patients	212	5%

The following is the figures for assault rates per 1000 staff for these incidents.

Trust	Total Assaults (1)	DH total staff (2)	Assaults per 1000 staff (3)	Declared total staff (4)	Assaults per 1000 staff(5)	Declared Sanctions (6)
Calderstones Partnership NHS Foundation Trust	1,195	1,635	731	1,088	1,098	44
Coventry and Warwickshire Partnership NHS Trust	2,540	4,034	630	4,916	517	1
Northumberland, Tyne & Wear NHS Foundation Trust	212	6,020	35	6,464	33	25
Hertfordshire Partnership NHS Foundation Trust	1,034	2,553	405	2,653	390	0
Sheffield Health and Social Care NHS Foundation Trust	1,143	2,738	417	3,180	359	0