



Northumberland,
Tyne and Wear
NHS Foundation Trust

Self help and support

How you can help yourself



Caring | Discovering | Growing | **Together**

Northumberland, Tyne and Wear NHS Foundation Trust provides a range of mental health, learning disability and specialist services for a large part of the North East of England and beyond.

You may not think these services have very much to do with you, but mental health problems affect 1 in 4 people and there are a growing number of people with both learning and other disabilities.

Self Help Guides

The Trust produces a series of *award winning self help guides which can be accessed at www.ntw.nhs.uk/selfhelp

This booklet details some of the most popular guides in the series visit www.ntw.nhs.uk/selfhelp to view the full range of titles.

The guides are meant as an introduction to self help techniques. You may need to seek additional support from a health professional.

* British Medical Association Patient Information Awards

Anxiety

Anxiety is something we all experience from time to time. It is a normal response to situations that we see as threatening to us. For example, if we had to go into hospital for an operation, or had to sit a driving test, or take an exam, it would be natural to feel anxious. Anxiety at certain levels can even be helpful in some situations such as when we need to perform well, or cope with an emergency.

To learn more about Anxiety see our self help guide at www.ntw.nhs.uk/selfhelp

Bereavement

Coping with bereavement and grief can be different for everyone and people can have quite different experiences when they lose someone close to them.

You can access further information about

- details of what needs to be done when there is a death.
- understanding some of the emotions which may be faced during a bereavement or loss.
- practical suggestions which may help you get through a bereavement.

To learn more about coping with Bereavement see our self help guide at www.ntw.nhs.uk/selfhelp

Controlling Anger

Everyone feels angry at times, this is often due to life stresses such as money or housing problems or difficulties in relationships. For some people the problem becomes much worse and gets in the way of normal life. Anger becomes a problem when it becomes too strong, happens too often and lasts too long.

If you have a problem with anger you probably already know it. You may feel that you can do little to control your anger – but there are things that you can do to make a difference.

To learn more about Controlling Anger see our self help guide at www.nw.nhs.uk/selfhelp

Depression and Low Mood

Depression is a very common problem and many people feel low or down in the dumps at times. This may be due to life stresses such as bereavement, money or housing problems or difficulties in relationships. For some people the problem becomes much worse and gets in the way of normal life.

It may seem that nothing can be done to help you feel better. But there are things that you can do to make a difference. There is also further help you can get if the depression does not seem to be getting any better.

To learn more about Depression and Low Mood see our self help guide at www.nw.nhs.uk/selfhelp

Health Anxiety

We all worry about our health from time to time, for example, if we had to go into hospital for an operation, or if we are recalled by our doctor following tests.

Health worries become a problem when they begin to get in the way of normal life even though there is no reason to think that anything is seriously wrong.

If you find yourself with many troublesome worries about your health you may be experiencing health anxiety.

To learn more about Health Anxiety see our self help guide at www.nrw.nhs.uk/selfhelp

Obsessions and Compulsions

Most people who have Obsessive Compulsive Disorder (OCD) find that there is a pattern in their thoughts, feelings and actions. They feel anxiety or discomfort at having the obsession, and relief once they have carried out the compulsive act. This becomes a vicious cycle which strengthens itself and becomes more likely to happen again.

Most people with OCD know that their compulsions are unreasonable or 'over the top' but they feel unable to control their thoughts or change their behaviour. People may think about seeking help when their lives are becoming disrupted by these unwanted thoughts and actions.

To learn more about Obsessions and Compulsions see our self help guide at www.nrw.nhs.uk/selfhelp



Post Traumatic Stress

A traumatic incident can be anything that is out of the ordinary range of daily events and is deeply distressing to someone. Many things can have this impact. It could be a fire, an accident, a robbery or burglary, an attack, being a witness to a traumatic event such as a death. It can be large scale such as a major disaster involving many people or a personal event involving yourself, friends or family members.

The self help guide will help you to understand reactions to trauma and offers some practical suggestions to help you cope.

To learn more about Post Traumatic Stress see our self help guide at www.ntw.nhs.uk/selfhelp

Social Anxiety

Shyness and social anxiety are common problems that affect both men and women. Most of us feel shy or anxious in social situations at a certain point in our lives. This can be a much more serious problem for some people who find that their lives are made very difficult by their problem.

The self help guide aims to help you to:

- recognise whether you may have a problem with shyness or social anxiety;
- understand what it is, what can cause it, and what can help keep it going;
- look at ways you can help yourself to overcome shyness or social anxiety.

To learn more about Shyness and Social Anxiety see our self help guide at www.ntw.nhs.uk/selfhelp

Sleeping Problems

Sleep problems are very common and are often referred to as insomnia. People can become very distressed when they feel they are not getting a good night's sleep, which can make it harder to get off to sleep.

But what is a normal amount of sleep? How much sleep do we need? The self help guide will help you to understand sleep problems and to learn some simple ways to sleep better.

To learn more about how to cope with Sleeping Problems see our self help guide at www.ntw.nhs.uk/selfhelp

Stress

Stress is the word that many people use when they are describing how the demands of their life seem to be becoming too great for them to cope with. Whilst many of us suffer with stress at times in our day to day lives, long-term stress is known to be bad for our health and many of us would like to find ways to gain some control over it.

To learn more about how to cope with stress see our self help guide at www.ntw.nhs.uk/selfhelp

For a full list of guides in this series visit www.ntw.nhs.uk/selfhelp



Are you worried about your own mental health or the mental health of someone you know?

- Speak to a loved one or someone you trust about how you are feeling.
- If any of the problems identified in this guide sound relevant to your current problems access the full guide online www.ntw.nhs.uk/selfhelp
- Make an appointment with your GP to discuss your current problems. He/she will be able to advise you about what local services are available to you based around whether your symptoms are mild, moderate or complex.
- This might include advising you to read through some specific self help materials, advising you to self-refer or referring you directly to a local Counselling Service, Psychological Wellbeing Service (sometimes called IAPT services); or if your problems are more complex the local Community Treatment Team (CTT).
- Your GP may also discuss medication options with you if you agree this is appropriate.
- You can refer yourself to many helpful local services by phoning up, or for some services you can self-refer through their website.

If you need urgent help with your mental health or learning disability you can get in touch with the Trust's Initial Response services. Open for anyone to call, 24 hours a day.

If you live in:

- South Tyneside or Sunderland call 0303 123 1145
- North Tyneside or Northumberland call 0303 123 1146
- Newcastle or Gateshead call 0191 814 8899
- if you or another person have been harmed or are at immediate risk you may require an emergency response contact 999.

If you are worried about the mental health of someone that you know.

- If you feel able, listen to their concerns and ask them to consider seeking out more information about their current difficulties.
- If you feel able, ask them to seek help; either by contacting a talking therapies service directly or assisting them in making an appointment with their GP or call the Initial Response service - telephone numbers are listed on the previous page.
- If the person you know is anxious about contacting services it might be useful if you sit with them while they make a phone call to services or attend a GP appointment with them; if they are agreeable and if you feel able.
- Sometimes people with mental health problems find it difficult to recognise the problems they are having so it is important you are patient with them.
- If your concerns about their mental health start to grow it might be that you need to contact mental health services on their behalf (with their consent).

Recovery Colleges

A safe space where people can connect, gain knowledge and develop skills that support recovery. Courses are open to anyone who would find them useful in their recovery from mental illness, substance misuse, trauma or distress.

For further information speak to a healthcare worker or visit www.nrw.nhs.uk/recovery



Psychological Wellbeing Services

This is a psychological therapy service available to people with mild to moderate common mental health problems. Common mental health problems include some of the problems described in this guide including low mood, depression, phobias, anxiety, generalised anxiety (worry), obsessive compulsive disorder, post-traumatic disorder, health anxiety, adjusting to life events and stress related difficulties.

Psychological Wellbeing Services are provided by a range of different organisations across local areas and below is a list of the provider, contact numbers and email addresses. They offer a range of different therapies including guided self help, specific groups/classes for different problems, Cognitive Behavioural Therapy, Interpersonal therapy, Cognitive Analytical Therapy and Systemic Therapy, but not all services have the same range of therapies.

- **Newcastle - Talking Helps Newcastle – The Psychological Wellbeing Service**
New Croft House, Market Street, Newcastle upon Tyne, NE1 6ND, Tel: 0191 282 6600 Fax: 0191 261 5078
Email: tnu-tr.PCMH@nhs.net
- **Northumberland - Talking Matters Northumberland**
Unit 4, Telford Court, Morpeth, Northumberland, NE61 2DB
Tel: 0300 3030 700 Email: info@tmnorthumberland.org.uk
- **Sunderland - Sunderland Psychological Wellbeing Service**
Monkwearmouth Hospital, Newcastle Road, Sunderland, SR5 1NB, Tel: 0191 566 5454 Email: spws@ntw.nhs.uk
- **Gateshead - Gateshead Talking Therapies**
The Croft, Springwell Road, Gateshead, NE9 7BJ,
Tel: 0191 283 2541 Fax: 0191 404 1325
Email: gatesheadtalkingtherapies@stft.nhs.uk

- **North Tyneside - North Tyneside Psychological Therapies**

Wallsend Health Centre, The Green, Wallsend, NE28 7PD

Tel: 0191 295 2775 Fax: 0191 295 2701

Email: nhc-tr.northtynesidetalkingtherapies@nhs.net

- **South Tyneside - South Tyneside Talking Therapies**

Cleadon Park Primary Care Centre, Prince Edward Road, South Shields, NE34 8PS

Tel: 0191 283 2134 Fax: 0191 404 1322

Email: stpcmhs@stft.nhs.uk

Veterans' Mental Health Transition, Intervention and Liaison Service

Provides an assessment, liaison and signposting service for military veterans and their families across the region. The service is for veterans of any age who have served in Her Majesty's Armed Forces at any time. Families and carers of veterans can also access the service. We work in partnership with Combat Stress and the Royal British Legion. Tel: 0303 123 1145 Email: vwals@nhs.net

Patient Advice and Liaison Service

PALS provide a free, confidential advice and support service. We can help you to sort out any concerns you may have about the care provided by Northumberland, Tyne and Wear NHS Foundation Trust.

- PALS North of Tyne Freephone: 0800 032 0202 9.00am - 4.30pm Monday to Friday
Freepost RLTC-SGHH-EGXJ, The Old Stables, Grey's Yard, Morpeth, NE61 1QD Email: pals@ntw.nhs.uk
- PALS South of Tyne Freephone: 0800 328 4397 9.00am - 5.00pm Monday to Friday
Garden Lodge, Hopewood Park, Ryhope, Sunderland, SR2 0NB Email: pals@ntw.nhs.uk

Support your NHS

Join our NHS Foundation Trust

Get Involved – Sign up to become a Northumberland, Tyne and Wear NHS Foundation Trust member and choose one self help guide for **free** from the list overleaf.

 ntw.nhs.uk/membership

 0191 245 6827

 FREEPOST NTW MEMBERSHIP

Membership is completely free and as a member you can:

- ⇒ Give your views on the Trust's plans and any issues that interest you
- ⇒ Vote in the Governor Elections or stand as a Governor yourself
- ⇒ Receive regular information about the Trust

Membership Application Form

Public *Service User *Carer (please tick only one)

*Service User/Carer I currently use or have used the following NTW service in the last four years or cared for someone who has used an NTW service in the last six years: (please tick service used below)

- Adult services Neuro Disability Services
 Older People's Services Learning Disability Services
 Children and Young People's Services

Mr Mrs Miss Ms Mx Other:

First name: Surname:

Address:

Postcode: DOB

How would you like us to contact you? (please tick/complete)

Post Email

Tel Mobile

Signed: Date:

Free self help guide

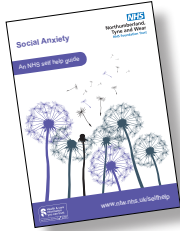
Please send me a copy of:

We will only contact members by their preferred method. The Trust may need to share your information with third party organisations for governor elections, printing and maintaining a membership database. Cancellation of membership can be made at any time online or by contacting the Corporate Affairs/Membership office Tel: 0191 245 6827 or email members@ntw.nhs.uk

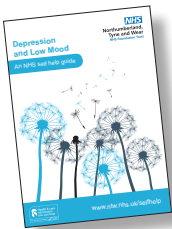
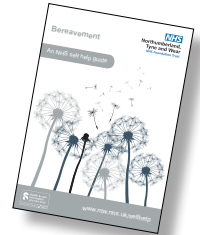
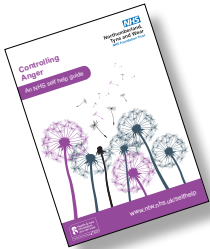
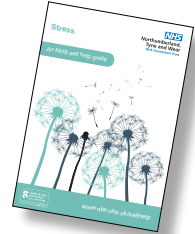
Mental Health Self Help Guides



Northumberland,
Tyne and Wear
NHS Foundation Trust



- Abuse
- Alcohol and You
- Anxiety
- Bereavement
- Controlling Anger
- Depression and Low Mood
- Depression and Low Mood - a guide for partners
- Domestic Violence
- Eating Disorders
- Food for Thought
- Health Anxiety
- Hearing Voices and Disturbing Beliefs
- Obsessions and Compulsions
- Panic
- Post Traumatic Stress
- Postnatal Depression
- Self Harm
- Social Anxiety
- Sleeping Problems
- Stress
- Plus 3 guides for prisoners
 - Anxiety
 - Depression and Low Mood
 - Post Traumatic Stress



www.ntw.nhs.uk/selfhelp



@ntwnhs



ntwnhs



Download on the
App Store



GET IT ON
Google Play

Northumberland, Tyne and Wear NHS Foundation Trust

LGBT+ Network

For information on support agencies or to talk to a member of staff from the LGBT+ Network please email LGBT@ntw.nhs.uk with your contact details and we will get back to you as soon as we can. Your enquiry will be treated with the utmost confidence.

Northern Region Gender Dysphoria Service

The Northern Region Gender Dysphoria Service based at Walkergate Park, Newcastle is a service for people who experience persistent confusion and/or discomfort with their gender. This includes people who want to change physical aspects of their gender as well as those who do not. The service is available to people over the age of 17 years who live in England.

The Northern Region Gender Dysphoria Service offers psychiatric and psychological assessment, support, counselling and speech and language therapy to people within the service, depending on their needs. The service provides advice to other professionals, including advice on medical treatments.

How to get Referred

People can be referred to the service via a psychiatrist, GP, consultant physician or other healthcare professional from anywhere in England. For more information visit www.ntw.nhs.uk

Website: <https://www.ntw.nhs.uk/services/northern-region-gender-dysphoria-service-specialist-service-walkergate-park/>

Tel: 0191 287 6130

Email: NRGDS@ntw.nhs.uk

www.ntw.nhs.uk

This information can be made available in a range of formats on request (eg Braille, audio, larger print, easy read, BSL or other languages). Please contact the Patient Information Centre 0191 246 7288

Published by the Patient Information Centre 2019, copyright, Northumberland, Tyne and Wear NHS Foundation Trust.

Ref, PIC/SHSUPPORT V5 May 2019

Review date 2022

